



# Lal Lal Wind Farms

## Off-Site Landscaping Program

Prepared by:

**Lal Lal Wind Farms Nom Co Pty Ltd**

April 2019

PLANNING AND ENVIRONMENT ACT 1987	
PLANNING SCHEME	<u>Moorabool</u>
PERMIT NO.	<u>PL-SP/05/0461/c</u>
ENDORSED PLAN	
SHEET 1 OF 26	
SIGNED	<u>S. Menzies</u> FOR
MINISTER FOR PLANNING	
DATE: <u>17/4/19</u>	

ENDORSED TO COMPLY
WITH CONDITION
<u>12</u>
OF PLANNING PERMIT
<u>PL-SP/05/0461/c</u>

## Contents

<b>1. INTRODUCTION .....</b>	<b>3</b>
<b>2. LAL LAL WIND FARM.....</b>	<b>4</b>
2.1 Overview.....	4
2.2 Planning Permit .....	4
<b>3. OFF-SITE LANDSCAPING PROGRAM .....</b>	<b>6</b>
3.1 Objective.....	6
3.2 Recipients .....	6
3.2.1 The owners of all dwellings within 4km of a turbine where a turbine is visible .....	6
3.2.2 The Shire of Moorabool as Committee or Management for Lal Lal Reserve .....	8
3.2.3 The Sovereign Hill Museums Association in relation to the property known as Narmbool .....	10
3.2.4 St Sava Orthodox Monastery .....	12
<b>4. METHODOLOGY .....</b>	<b>14</b>
4.1 The owners of all dwellings within 4km of a turbine where a turbine is visible from the dwelling .....	14
4.1.1 Determination of Owners .....	14
4.1.2 Monetary Payment .....	14
4.1.3 Landscaping .....	15
4.2 The Shire of Moorabool as Committee or Management for Lal Lal Reserve .....	19
4.3 The Sovereign Hill Museums Association in relation to the property known as Narmbool.....	19
4.4 St Sava Orthodox Monastery.....	19
<b>5. PROCESS FOR MAKING OFFERS .....</b>	<b>20</b>
5.1 The owners of all dwellings within 4km of a turbine where a turbine is visible from the dwelling .....	20
5.1.1 Monetary Contribution .....	20
5.1.2 Landscaping .....	21
5.2 The Shire of Moorabool as Committee or Management for Lal Lal Reserve .....	21
5.3 The Sovereign Hill Museums Association in relation to the property known as Narmbool.....	21
5.4 St Sava Orthodox Monastery.....	21
<b>6. PROCESS FOR RECORDING .....</b>	<b>22</b>

## 1. INTRODUCTION

ERM Australia Pty Ltd (ERM) has been engaged by Lal Lal Wind Farms Nom Co Pty Ltd (Lal Lal Wind Farms) to prepare an Off-site Landscaping Program associated with Lal Lal Wind Farms. This wind farm was approved by the Minister for Planning under Planning Permit No. PL-SP/05/0461/C issued on 30 April 2009 (amended 20 March 2017, 23 April 2018 and 27 September 2018).

Condition 12 of the permit requires an Off-site Landscaping Program to be endorsed by the responsible authority. This report has been prepared to meet the requirements of this condition.

The following sections of the report outline:

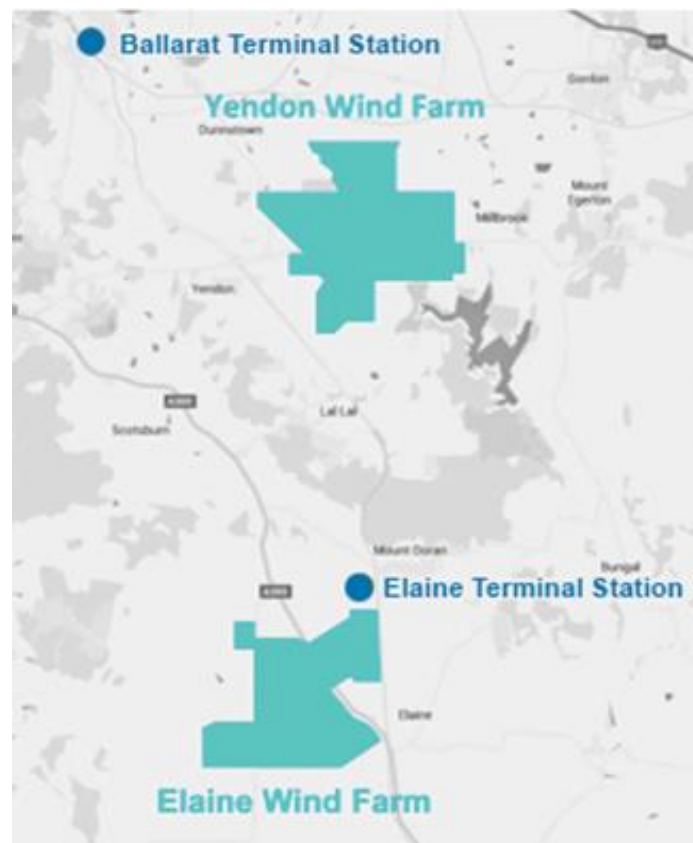
- An overview of the Lal Lal Wind Farm;
- An overview of the Off-site Landscaping Program;
- Off-site Landscaping Program methodology;
- The process for making offers; and
- The process for recording the offers.

## 2. LAL LAL WIND FARM

### 2.1 Overview

Lal Lal Wind Farms are approximately 2,100 hectares in area located on land at Elaine and Yendon, within Moorabool Shire. The wind farm essentially comprises two components located approximately 9 km apart, respectively 25km and 17km southeast of Ballarat. The wind farms comprise a total of 60 turbines, with 38 km located in Yendon and 22 km in Elaine. Refer to Figure 1 below for a locality map of Lal Lal Wind Farms.

*Figure 1: Lal Lal Wind Farms Locality*



Refer to Appendix 1 for a copy of the site layout approved by the Minister for Planning.

Lal Lal Wind Farms are expected to generate approximately 220MW per year which is enough to power approximately 95,000 homes per year. The project is estimated to save 780,000 tonnes of carbon dioxide each year.

Construction of Lal Lal Wind Farms is expected to be completed in stages throughout 2019, with operations commencing at Yendon in July 2019 and Elaine in September 2019

### 2.2 Planning Permit

Lal Lal Wind Farms was approved under Planning Permit No. PL-SP/05/0461/C (planning permit) issued by the Minister for Planning on 30 April 2009 (Amended 20 March 2017, 23 April 2018 and 27 September 2018).

The permit allows:

*'Use and development of the land for a Wind Energy Facility comprising a maximum of 60 wind turbines and their associated infrastructure and other works including: the construction of access tracks; underground cabling; two permanent amenities buildings; two electrical substations; two permanent meteorological monitoring facilities and associated equipment; car parking and bicycle facilities, temporary construction facilities (including an ancillary concrete batching plant), business identification signs and alterations to access points to roads in a Road Zone.'*

Condition 12 of the permit requires:

***'OFF-SITE LANDSCAPING PLAN***

*'Within 6 months of development commencing on site, an Off-site Landscaping Program must be submitted to the responsible authority. When endorsed, the Program will form part of this permit.*

*The Off-site Landscaping Program must:*

- a) Provide for off-site landscaping or other treatments to reduce the visual impact of the turbines to be made to the following parties as existing at 20 March 2017:*
  - (i) The owners of all dwellings within 4km of a turbine where a turbine is visible;*
  - (ii) The Shire of Moorabool as Committee or Management for Lal Lal Reserve;*
  - (iii) The Sovereign Hill Museums Association in relation to the property known as Narmbool; and*
  - (iv) St Sava Orthodox Monastery.*
- b) Require for offers referred in (a) to be made available up until 12 months after the commissioning of the last turbine of the development or relevant stage.*
- c) Include a methodology for determining:*
  - (i) The type of landscaping treatments to be proposed; and*
  - (ii) A timetable for establishing and maintaining the landscaping for at least two years.*
- d) Include a process for making offers to affected landowners to undertake landscaping on the landowner's land'*
- e) Include a process for recording:*
  - (i) Offers that have been made to landowners;*
  - (ii) Whether or not the offers are accepted; and*
  - (iii) When and how offers are actioned following acceptance.*

*The endorsed Off-site Landscaping Program must be implemented to the satisfaction of the responsible authority. The endorsed off-site Landscaping Program must not be altered or modified without the written consent of the responsible authority.'*

This report has been prepared to meet the requirements of this Condition.

### 3. OFF-SITE LANDSCAPING PROGRAM

#### 3.1 Objective

The key objective of the Off-site Landscaping Program is to provide a framework for the provision of off-site landscaping or other treatments to reduce the visual impact of approved turbines to relevant parties existing on 20 March 2017.

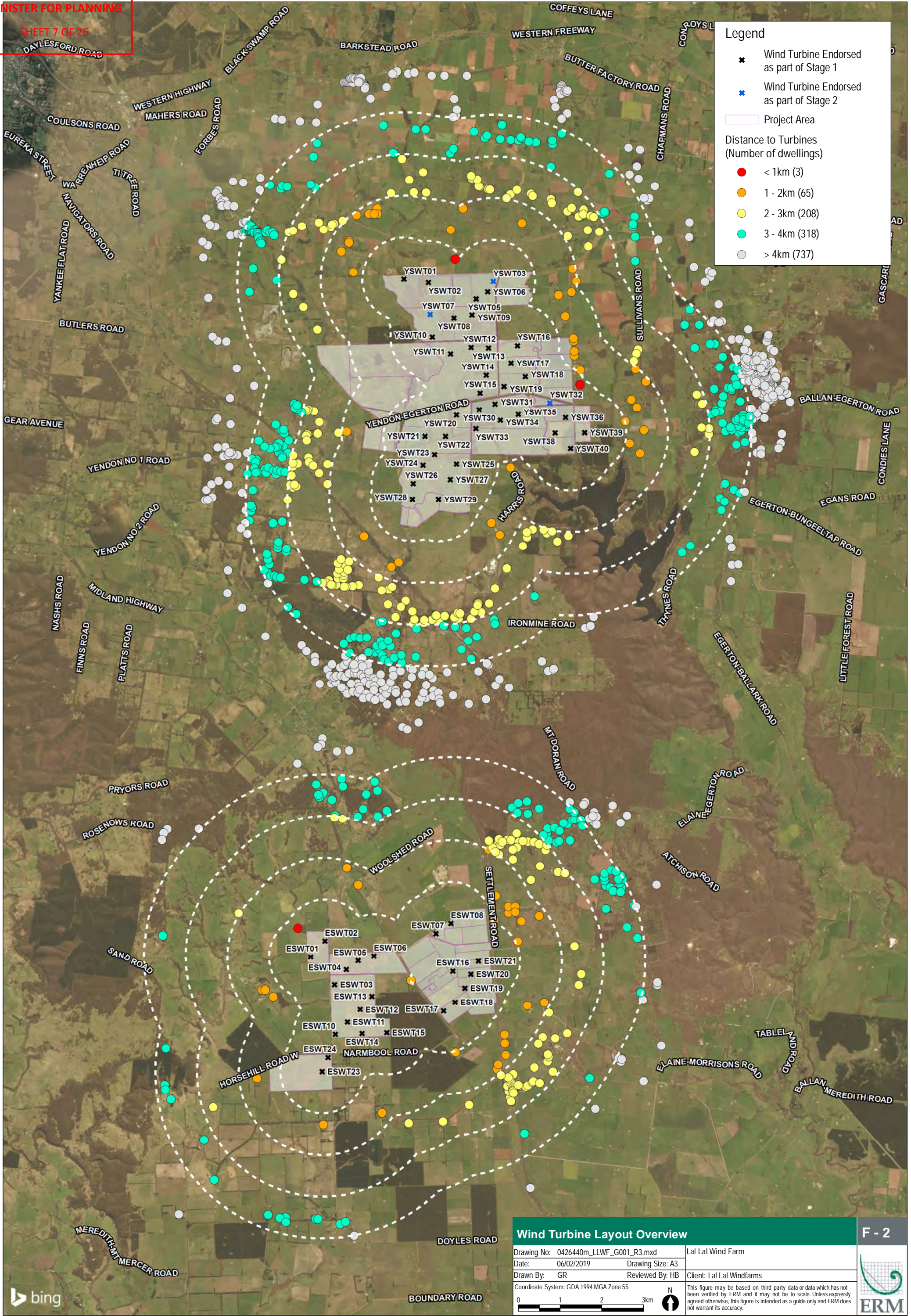
#### 3.2 Recipients

The parties which are entitled to the provision of off-site landscaping or other treatments to reduce the visual impact of approved turbines on their properties are listed in Condition 12a) of the planning permit, and described below.

##### 3.2.1 The owners of all dwellings within 4km of a turbine where a turbine is visible

Dwellings which existed on 20 March 2017 and are located within 4km of a visible turbine are shown in Figure 2 overleaf. The owners of these dwellings are entitled to the provisions of the off-site landscaping program pursuant to Condition 12 of the planning permit.







There are a total 594 dwellings located within 4km of a wind turbine (as at 20 March 2017). These are categorised as per Table 3.1 below.

*Table 3.1: Number of dwellings within 4 Km of Lal Lal Wind Farms*

Radius	Number of Dwellings
<1Km	3
1-2Km	65
2-3Km	208
3-4Km	318

### 3.2.2 The Shire of Moorabool as Committee or Management for Lal Lal Reserve

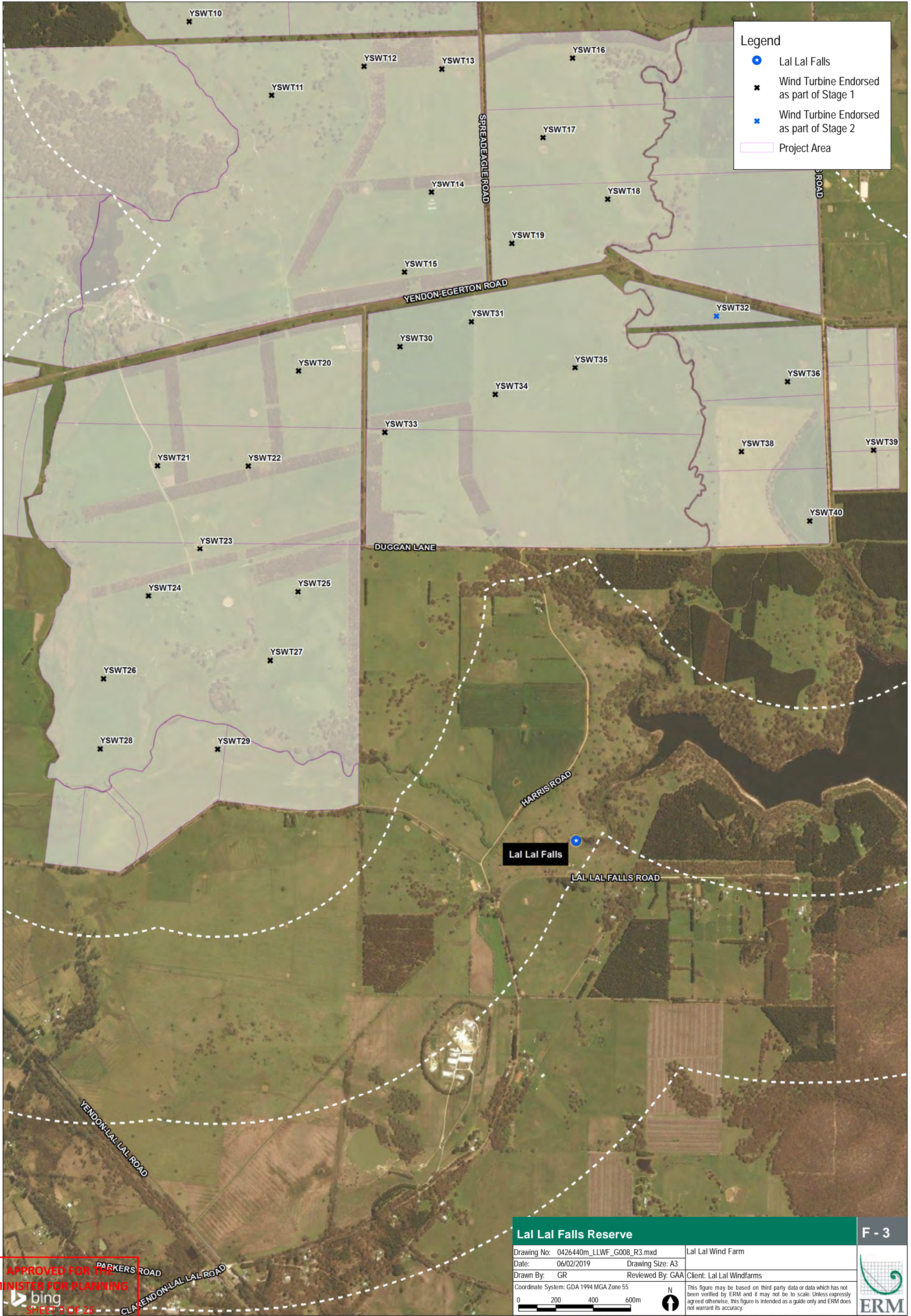
Lal Lal Falls Reserve is located south east of the Yendon component of Lal Lal Wind Farm.

There are two main elements to this reserve, the picnic area itself which comprises a rotunda, and the lookout to the falls. The nearest turbine is approximately 2km from the picnic area. Refer to Figure 3 overleaf for a locality map of Lal Lal Falls Reserve in relation to Lal Lal Wind Farms.

**APPROVED FOR THE  
MINISTER FOR PLANNING**

SHEET 8 OF 26





Legend

Lal Lal Falls

Wind Turbine Endorsed as part of Stage 1

Wind Turbine Endorsed as part of Stage 2

Project Area

Lal Lal Falls Reserve

F - 3

Drawing No: 0426440m\_LLWF\_G008\_R3.mxd

Date: 06/02/2019

Drawn By: GR

Coordinate System: GDA 1994 MGA Zone 55

Drawing Size: A3

Reviewed By: GAA

0 200 400 600m

N

Lal Lal Wind Farm

Client: Lal Lal Windfarms

This figure may be based on third party data or data which has not been verified by ERM and it may not be to scale. Unless expressly agreed otherwise, this figure is intended as a guide only and ERM does not warrant its accuracy.

ERM

APPROVED FOR THE  
MINISTER FOR PLANNING

bing

SHEET 9 OF 26



### 3.2.3 The Sovereign Hill Museums Association in relation to the property known as Narmbool

The Narmbool property occupies some 2000 ha and is located west of the Elaine component of Lal Lal Wind Farm. It comprises a reception centre and gardens, a manager's house and an education centre. The closest turbine is located approximately 1.3km from the garden area of this property. Refer to Figure 4 overleaf for a locality map of Narmbool in relation to Lal Lal Wind Farms.



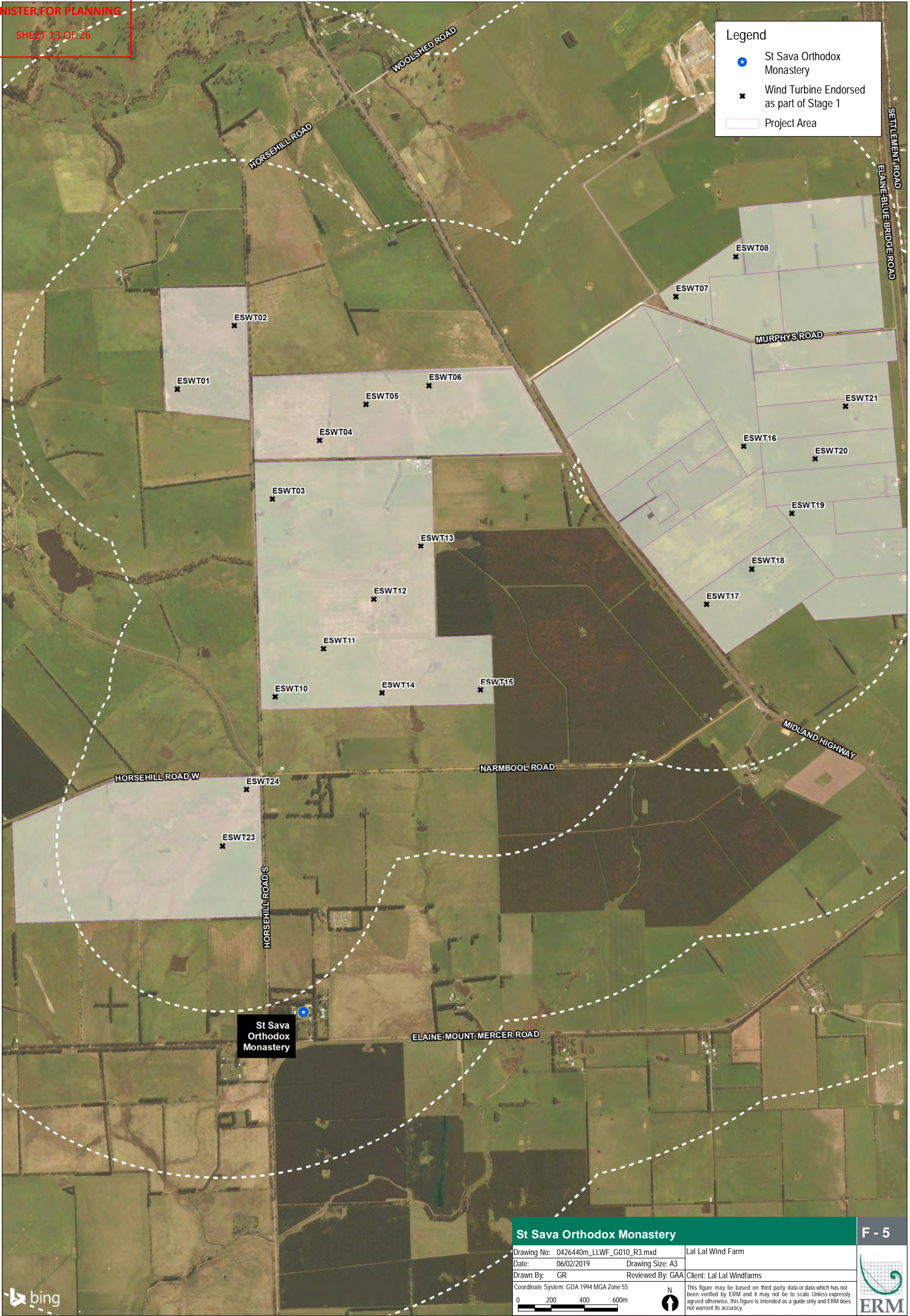




#### 3.2.4 St Sava Orthodox Monastery

The St Sava Orthodox Monastery is located to the north east of the intersection of Horsehill North Road and Elaine-Mt Mercer Road. The monastery lies immediately south of the Elaine component of Lal Lal Wind Farm, and approximately 1.1km from the closest turbine. Refer to Figure 5 overleaf for a locality map of St Sava Orthodox Monastery in relation to Lal Lal Wind Farms.







## 4. METHODOLOGY

### 4.1 The owners of all dwellings within 4km of a turbine where a turbine is visible from the dwelling

Two options regarding treatments to reduce the visual impact of approved turbines on dwellings will be offered to owners of all dwellings existing on 20 March 2017 which are located within 4km of a visible turbine. Dwelling owners may choose one option only.

As a first offer a 'one off' monetary payment will be offered to owners. The intent is that the money is used by owners to implement their own landscape screening on their property within their own timeframes.

As a second option owners can opt for landscape screening to be undertaken by Lal Lal Wind Farms in accordance with an agreed landscape plan. Further details of each option are provided in Sections 4.1.2 and 4.1.3 of this report.

#### 4.1.1 Determination of Owners

The dwellings which are located within 4km of a visible turbine as at 20 March 2017 and therefore subject to the landscaping screening program are shown in Figure 2 included at Section 3.2.1 of this report.

A door knock and letterbox drop off exercise will be undertaken within 4kms of the wind farm to offer information about how home owners can apply for the landscaping program.

Should owners subject to the landscaping program as described above participate in the landscaping program, they are required to provide a current rates notice with name and address details, to establish proof of residence and ownership. These details will be cross referenced with the details of persons who apply to access the screening program. The process for making offers to affected landowners including the process for persons to apply is outlined in Section 5.1 of this report.

#### 4.1.2 Monetary Payment

As a first option a monetary payment will be offered to entitled dwelling owners. The intent is that the money is used by owners to implement their own landscape screening on their property within their own timeframes.

Owners will be responsible for the full implementation of the landscaping including sourcing and purchasing of plants, as well as planting and on-going maintenance of the landscaping.

There will be no involvement by Lal Lal Wind Farms in any part of the implementation and maintenance of the landscaping if an owner selects the monetary option.

The amount offered to each entitled dwelling owner will be dependent on the distance of the dwelling from the closest visible turbine. The breakdown of payments is shown in Table 4.1 below.

*Table 4.1: Monetary amount offered as per distance to nearest turbine*

Distance of dwelling from closest visible turbine (km)	Amount (AUD\$)
0-2	4,000
2-3	3,000



3-4

2,000

The distance of the dwellings from turbines shown in 1km intervals is illustrated in Figure 2 included in Section 3.2.1 of this report.

Landscape screening to adequately reduce the visual impact of turbines on a dwelling may typically comprise up to:

- 100 - 200 tube stock
- 20 - 40 x 140mm plants
- 50 - 150m of fencing

A guide regarding general costs associated with the above treatments based on local nursery suppliers is:

- Tube stock – assorted native: \$2.65
- 140mm plants – assorted native: \$9.50
- 200mm – assorted native: \$17.25
- Estimated cost of fencing: \$12.00 per metre

It has been demonstrated that over time, plants installed as tube stock or in 140 mm pots are proven to better acclimatise to the site and conditions and yield a stronger, robust and more vigorous plant. For this reason it is recommended that plants are planted as tube stock. Once a landowner registers for the monetary payment or landscaping option and it is accepted by Lal Lal Wind Farms, there will be no recourse for the landowner to revert to the alternative option.

Once the relevant payment is made to the landowner the requirements of Condition 12 of Planning Permit No. PL-SP/05/0461/C as it relates to that landowner will be considered to have been met in full. Lal Lal Wind Farms will have no further obligations with regard to providing landscape screening treatments to the landowner's property including in relation to maintenance.

The process for making the monetary payments to entitled dwelling owners is detailed in Section 5.1.1 of this report.

#### 4.1.3 Landscaping

An entitled dwelling owner may choose to 'opt out' from the monetary payment option detailed in Section 4.1.2 above, and instead apply for landscape screening to be undertaken on their property and paid for and maintained (for two years only) by Lal Lal Wind Farms in accordance with an agreed landscape plan.

For this option the landowner will not receive any monetary payment. The landowner may only revert to the monetary payment option if agreed to in writing by Lal Lal Wind Farms.

The process for making the offers of the landscaping is detailed at Section 5.1.2 of this report.

The methodology regarding the landscape screening is set out below.

### What is allowed for as part of this screening program

The landscape screening program allows for the practical provision of works to enable agreed landscape mitigation areas to screen approved turbines. Works included in the establishment of landscape mitigation areas may include one or more of the following:

- Deep ripping of the agreed areas set aside for landscape new plantings;
- Weed control by spraying the new planting areas;
- Vermin proof fencing;
- Gates for maintenance access;
- Maintenance for up to two years including weeding and watering; and
- Replacement of dead plants lost to natural causes such as frost or vermin.

Works that are not included by the landscape screening program include:

- Removal of debris, machinery, vehicles, materials, rubbish or structures from the areas agreed for landscape screening;
- Removal of trees or shrubs either dead, senescing or healthy from the landscape screening areas; and
- Screening provided at other locations on the property such as the horse arena or farm paddock.

### Process for assessing views of visible turbines and landscape screening

One site visit will be scheduled for the Projects Community Engagement Manager and a suitable qualified Landscape and Visual consultant.

A draft plan will be prepared to assist with on-site discussion with the affected landowners. The plan will show (as appropriate):

- Proximity and direction of views from the dwelling to the wind farm;
- Existing landscape and visual setting such as trees, sheds and structures for the benefit of on-site discussions and planning for new landscape screening; and
- the visible turbines which are closest to the dwelling and the approximate distance.

Photographs will be taken to record both the affected viewing location and the view to be mitigated by landscape screening.

Within approximately three (3) weeks of the site visit, a PDF of the plans discussed on site will be emailed to the affected landowners for their review and written approval, or as otherwise agreed.

In addition to the draft plans, the final landscape plan will show agreed locations of:

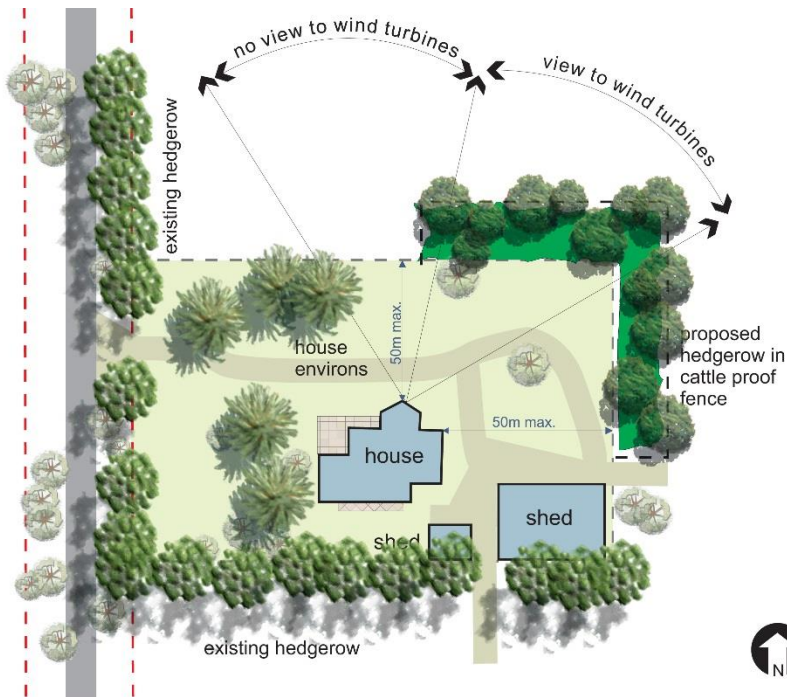
- The landscape mitigation area;
- Extent of fencing;

- Location of gates; and
- Plant numbers, species and installation size.

Up to three revisions of the plan will be prepared.

Figures 6 and 7 below show the typical approach to assessing the extent of required screening.

Figure 6 Extent of Screening



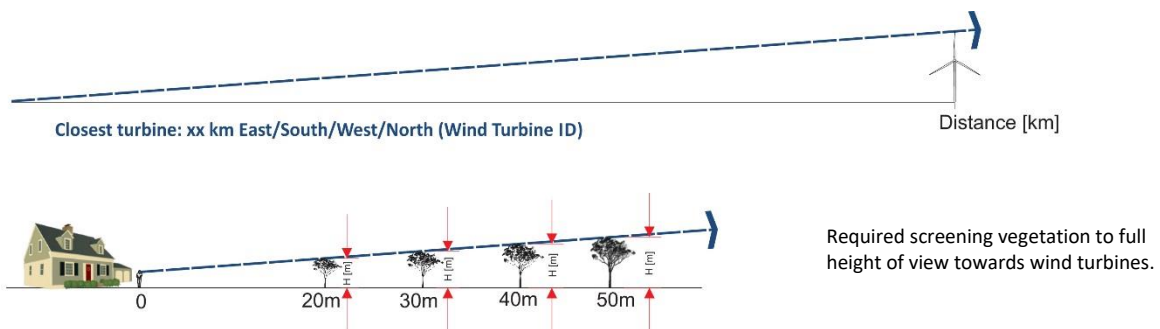
Required screening vegetation to full width of view towards wind turbines.

Views to be screened from

- habitable rooms from within the dwelling;
- the main entrances/exits i.e. front, side, rear or laundry entrance;
- Artist's studios; and
- areas of outdoor private open space that are within 50m of the dwelling.

There is allowance for one (1) row of screen planting at spacing that is appropriate for each vegetation species provided to be part of the landscape screening plan.

Figure 7 Determination of screening height



## Selection of Vegetation

Species for new planting areas will be discussed and agreed to with the affected landowners and may include Natives species, exotics or both. No deciduous species will be used given their limited



screening ability during winter or exotics that would not survive through heavy frosts and windy conditions.

As mentioned in Section 4.1.2 of this report it has been demonstrated that over time, plants installed as tube stock or in 140 mm pots are proven to better acclimatise to the site and conditions and yield a stronger, robust and more vigorous plant. For this reason, plants will be installed as tube stock of the agreed type and species agreed with dwelling owners.

### Landscape Planting

There are two options in which landscape mitigation will be planted.

Option one allows for the affected landowner to conduct all works as shown on the plan within their own timeframes. Lal Lal Wind Farms will pay for all of the plants and materials, however the landowner will be responsible for all works including ground preparation, fencing, sourcing and planting out landscaping as well as general maintenance. This option can be attractive to farmers or other landowners who are able and willing to undertake these works within their own timeframes

Option two will see the landscaping works undertaken and maintained for a two year period by Lal Lal Wind Farms. Plant establishment includes the care of the contract areas by accepted horticultural practices. This may include (as required) watering, fertilising, cultivation, weeding, pests and disease control, replacement of plant materials and pruning.

Access to the screening areas are to be made available by the affected landowner, ready for the establishment of landscaping and maintenance works by the agreed date of commencement.

### Maintenance

Maintenance will be undertaken by Lal Lal Wind Farms for a period of 2 years (104 weeks).

Should Lal Lal Wind Farms implement the landscaping, the general requirements for landscape maintenance are set-out below.

### Watering

The Landscaper (commissioned by Lal Lal Wind Farms) shall make arrangements for the watering of the plant material. The landowner shall be wholly responsible for ensuring uninterrupted access to sufficient quantities of water to satisfactorily maintain the planting.

### Protection

The Landscaper shall protect the newly planted areas against trespass, traffic, livestock and verminas required until the plants are well established. Protection may include the erection of approved temporary fencing.

### Defects

Any plants found to be dead, damaged or missing or any defects to fencing or gates all as a result of inadequate maintenance, or that have become apparent under normal use shall be replaced by the landscaper.

#### 4.2 The Shire of Moorabool as Committee or Management for Lal Lal Reserve

The Shire of Moorabool as Committee or Management for Lal Lal Reserve will be offered landscaping on the Lal Lal Reserve to reduce the visual impact of turbines on this reserve.

The methodology to prepare the landscape plan is the same as that set out in Section 4.1.3 of this report, except that Lal Lal Wind Farms will solely be responsible for the landscape planting works.

The landscaping plan will be prepared in consultation with Lal Lal Falls Advisory Committee and Wathaurung Aboriginal Corporation, Parks Victoria and Moorabool Shire Council.

The process for making offers of landscaping to the Shire of Moorabool as Committee or Management for Lal Lal Reserve is outlined in Section 5.2 of this report.

#### 4.3 The Sovereign Hill Museums Association in relation to the property known as Narmbool

The Sovereign Hill Museums Association will be offered landscaping at 'Narmbool' to reduce the visual impact of turbines on this property.

The methodology to prepare the landscape plan is the same as that set out in Section 4.1.3 of this report, except that Lal Lal Wind Farms will solely be responsible for the landscape installation works.

The landscaping plan will be prepared in consultation with the Sovereign Hill Museums Association.

The process for making offers of landscaping to Sovereign Hill Museums Association in relation to 'Narmbool' is outlined in Section 5.3 of this report.

#### 4.4 St Sava Orthodox Monastery

The St Sava Orthodox Monastery will be offered landscaping to reduce the visual impact of turbines on this monastery.

The methodology to prepare the landscape plan is the same as that set out in Section 4.1.3 of this report, except that Lal Lal Wind Farms will solely be responsible for the landscape installation works.

The landscaping plan will be prepared in consultation with St Sava Orthodox Monastery.

The process for making offers of landscaping to the St Sava Orthodox Monastery is outlined in Section 5.4 of this report.

## 5. PROCESS FOR MAKING OFFERS

The process for making offers to entitled parties as listed in Section 3.2 of this report is outlined in the following sections. Offers to all parties will be available up to 12 months after the commissioning of the last turbine of the wind farm or relevant stage.

- Lal Lal Wind Farms will notify the community about their entitlements to the landscape program through: The Lal Lal Wind Farms website;
- A fact sheet to be distributed with the next available community bulletin, if possible, after the endorsement of the Landscape Program, detailing the conditions of the program and how to apply and enquire about it;
- Newspaper ads which will be placed in The Courier (Ballarat) and The Moorabool News;
- Information about the landscaping program provided to the Lal Lal Wind Farms Community Reference Group

### 5.1 The owners of all dwellings within 4km of a turbine where a turbine is visible from the dwelling

Lal Lal Wind Farm will undertake door knocking at all dwellings within 4 kms of turbines to inform landowners of the endorsed landscaping program. A fact sheet details to participate in the program will be provided to the landowners.

Should the landowner not be present at the time of visit, a calling card will be left with a copy of the fact sheet and details on how to contact Lal Lal Wind Farms should they require further information.

To expedite the process of fulfilling the landscape program a part time administration person will be hired and based at Buninyong Information Centre to process the applications. Lal Lal Wind Farms will aim to deliver this program as quickly and efficiently as possible to ensure the landscaping needs of the local community are met.

#### 5.1.1 Monetary Contribution

The following paperwork will be required from the applicants for Lal Lal Wind Farms to issue a monetary contribution:

- Proof of ownership as mentioned in Section 4.1.1 above;
- A signed waiver form accepting payment to fulfil their own landscaping needs and declaring that no further claims will be made on the project; and
- A completed application form that requests Electronic Funds Transfer (EFT) details of the owner to which the payment will be made.

Lal Lal Wind Farms will establish and provide the following:

- Confirmation of the dwelling owner's eligibility for the monetary contribution according to the following criteria:
  - ownership of dwelling existing on March 2017; and
  - is located within 4kms of the nearest turbine
- Details of where plants can be purchased locally and a retail guide of how much can be purchased for the monetary contribution they will receive;
- Details of plant species recommended for landscape screening;



- Maps of turbine locations should dwelling owners complete their own landscaping before turbines are constructed.

#### 5.1.2 Landscaping

Landscape screening will commence by way of direct contact from the Project's Community Engagement Manager for owners of all dwellings within 4.0 km of a wind turbine.

The program will also be advertised on the project website and through local newspapers.

An appointment will be made with a landscape consultant who will prepare a landscape plan to screen the dwelling from turbines. In consultation with the dwelling owner, plant species will be selected. The landscape plan will be then sent to the dwelling owner for their approval. When the dwelling owner approves the landscape plan and species of plants selected they will be asked to sign a form to say they are satisfied with the landscape plan. LLWF's will liaise with the dwelling owner regarding a suitable time to conduct the landscaping at their property. Following this the 2 year maintenance program will be discussed with the dwelling owner where ongoing access to their property will be arranged.

#### 5.2 The Shire of Moorabool as Committee or Management for Lal Lal Reserve

A draft landscape plan was prepared and submitted to the Lal Lal Falls sub-committee in August 2018, and presented to the Wathaurung Aboriginal Corporation in September 2018. A meeting will be held to discuss the landscaping plan in early 2019. The landscape plan will be finalized in consultation with the Shire of Moorabool and the Wathaurung Aboriginal Corporation, Parks Victoria and Moorabool Shire Council within 12 months of after this meeting.

#### 5.3 The Sovereign Hill Museums Association in relation to the property known as Narmbool

A draft landscape plan was completed and forwarded to Damon Minotti (Manager of Programs at Narmbool) in January 2018.

A meeting is scheduled between Lal Lal Wind Farms and Sovereign Hill Museums Association for May 2019 after turbines have been erected opposite the property homestead.

A draft landscape screening plan will then be prepared for sign off by Sovereign Hill Museums Association.

#### 5.4 St Sava Orthodox Monastery

A meeting was held between Lal Lal Wind Farms and Fr Petar in June 2018.

Lal Lal Wind Farms will make every reasonable attempt to consult and provide landscaping treatments in accordance with this program. All attempts to consult will be recorded in accordance with the process for recording set out in Section 6 of this document.

## 6. PROCESS FOR RECORDING

Lal Lal Wind Farms will make all reasonable attempts to offer landscaping or other treatments to reduce the visual impact of turbines to entitled parties in accordance with this Program.

To expedite the process of fulfilling the landscape program inclusive of the recording procedure, a part time administration person will be hired and be based at Buninyong Information Centre to process the relevant paper work. Lal Lal Wind Farms aims to deliver this program as quickly and efficiently as possible to ensure the landscaping needs of the local community can be met.

To demonstrate that all reasonable attempts have been made by Lal Lal Wind Farms, the following process for recording offers will be followed. Subject to this process being followed (but not necessarily limited to) the requirements of Condition 12 of Planning Permit No. PL-SP/05/0461/C will be considered to have been met.

A stakeholder database (such as Consultation Manager) will be used to manage and record all communications and offers made with landholders within 4 km of the turbines, the Shire of Moorabool, the Sovereign Hill Museums Association and St. Sava Orthodox Monastery. When and how offers are actioned will also be recorded on this database.

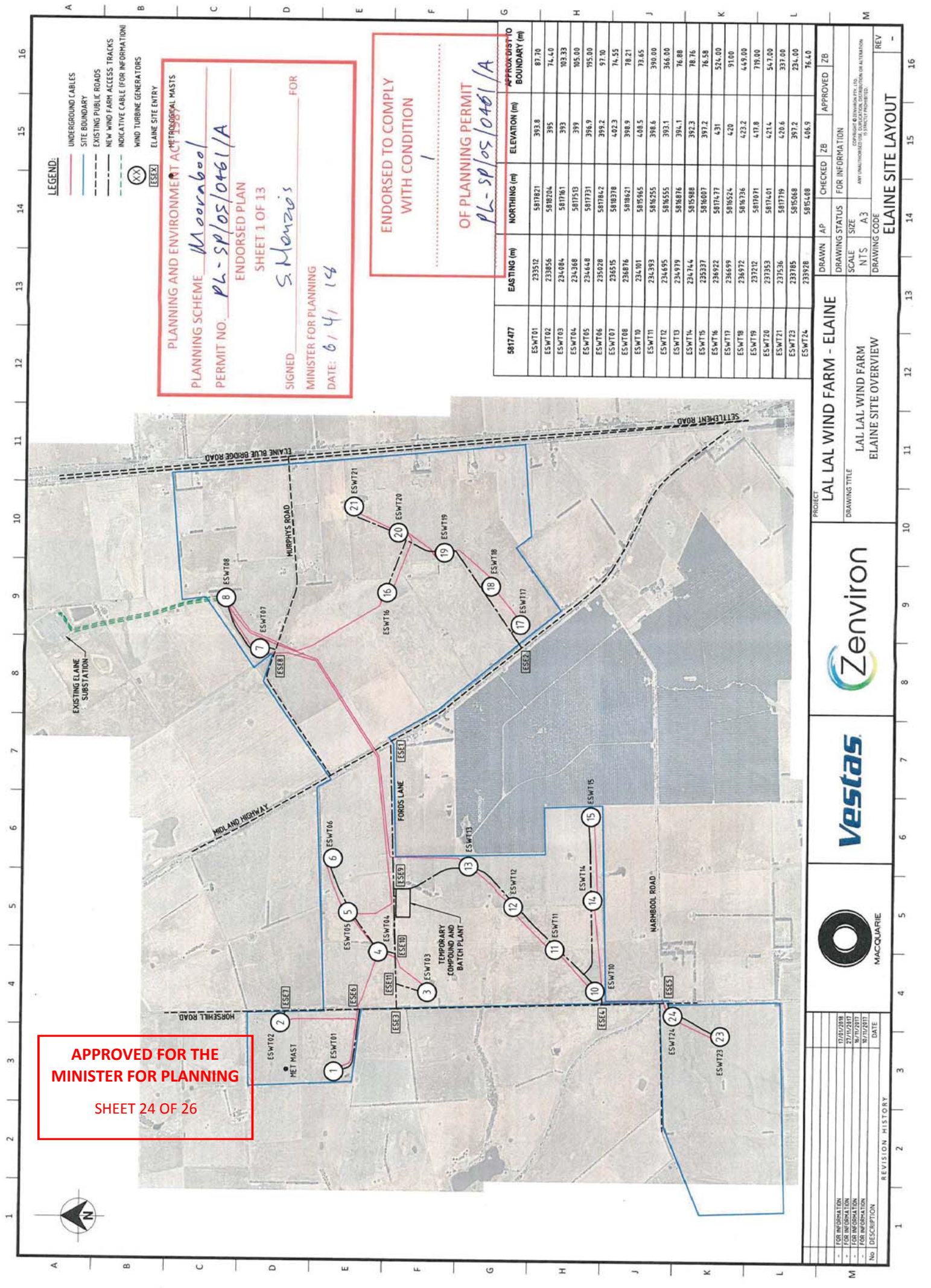
Every communication will be assigned an identity number. The time, date, outcome, type and participants of the communication will be recorded.

The stakeholder database will also record whether or not the landscape treatment offered to entitled parties has been accepted.

## Appendix A

# LaI LaL WIND FARMS ENDORSED LAYOUT PLANS





- LEGEND:
- UNDERGROUND CABLES
  - SITE BOUNDARY
  - EXISTING PUBLIC ROADS
  - NEW WIND FARM ACCESS TRACKS
  - INDICATIVE CABLE (FOR INFORMATION)
  - WIND TURBINE GENERATORS
  - ELaine SITE ENTRY

PLANNING AND ENVIRONMENT ACT 1987  
PLANNING SCHEME Moarabool  
PERMIT NO. PL-SP/05/0461/A  
ENDORSED PLAN  
SHEET 1 OF 13  
SIGNED S. Menzies FOR  
MINISTER FOR PLANNING  
DATE: 6/4/14

ENDORSED TO COMPLY  
WITH CONDITION  
1  
OF PLANNING PERMIT  
PL-SP/05/0461/A

5817477	EASTING (m)	NORTHING (m)	ELEVATION (m)	APPROXIMATE TO BOUNDARY (m)
ESWT01	233532	5818271	393.8	87.70
ESWT02	233856	5818204	395	74.40
ESWT03	234084	581761	393	103.33
ESWT04	234368	581753	399	105.00
ESWT05	234648	5817331	396.9	195.00
ESWT06	235028	5817842	399.2	97.00
ESWT07	236515	5818378	402.3	74.55
ESWT08	236876	5818621	398.9	78.21
ESWT09	234301	5818565	408.5	73.65
ESWT10	234393	5818255	398.6	390.00
ESWT11	234695	5818555	393.1	366.00
ESWT12	234979	5818816	394.1	76.88
ESWT13	234744	5818598	392.3	78.76
ESWT14	235337	5818007	397.2	76.58
ESWT15	236922	5817477	431	524.00
ESWT16	236692	5816524	420	91.00
ESWT17	236732	5816736	423.2	449.00
ESWT18	237212	5817071	417.8	719.00
ESWT19	237353	5817401	421.4	547.00
ESWT20	237536	5817719	428.6	337.00
ESWT21	237855	5815068	397.2	234.00
ESWT22	233928	5815408	406.9	76.40

FOR INFORMATION

12/02/2018

FOR INFORMATION

21/07/2017

FOR INFORMATION

09/12/2017

DESCRIPTION

REVISION HISTORY

DATE

LAL LAL WIND FARM - ELAINE

LAL LAL WIND FARM

ELAINE SITE OVERVIEW

SCALE

NTS

A3

DRAWING STATUS

FOR INFORMATION

DRAWING CODE

ELAINE SITE LAYOUT

DRAWN

AP

CHECKED

ZB

APPROVED

ZB

REVISION HISTORY

DATE

Vestas

Zen

MACQUARIE

FOR INFORMATION

12/02/2018

FOR INFORMATION

21/07/2017

FOR INFORMATION

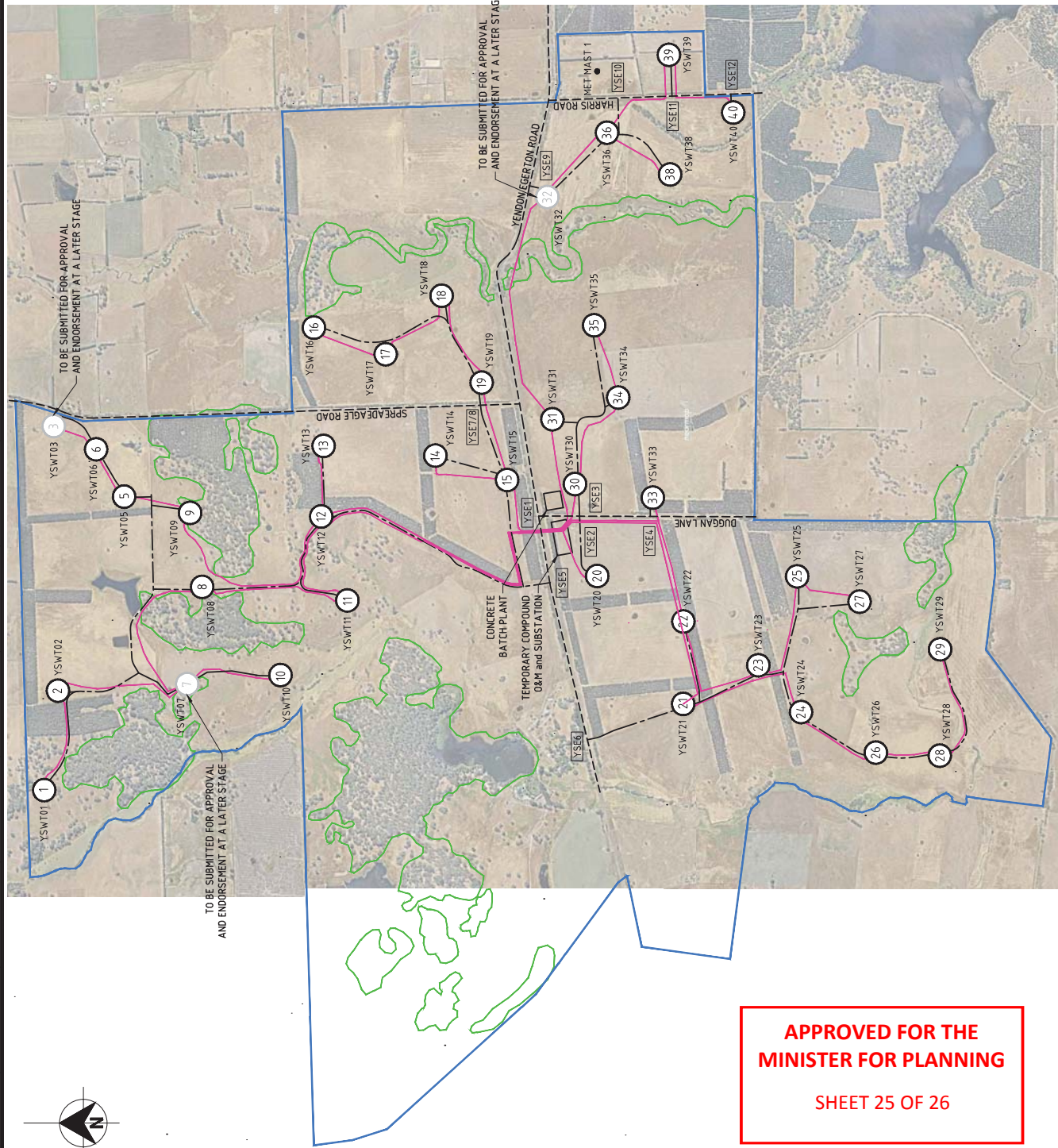
09/12/2017

DESCRIPTION

REVISION HISTORY

DATE





LEGEND:

- UNDERGROUND CABLES
- SITE BOUNDARY
- NATIVE VEGETATION
- EXISTING PUBLIC ROADS
- NEW WIND FARM ACCESS TRACKS
- WIND TURBINE GENERATORS
- YENDON SITE ENTRY
- METROLOGICAL MASTS

APPROVED FOR THE  
MINISTER FOR PLANNING  
SHEET 2 OF 13

TURBINE No	EASTING (m)	NORTHING (m)	ELEVATION (m)	APPROX DIST TO BOUNDARY (m)
YSWT01	23574.9	5834082	522	92.60
YSWT02	236335	5834001	532.4	556.67
YSWT03	237479	5833611	529.5	455.00
YSWT04	237758	5833776	527	175.00
YSWT05	23894.7	5833151	531.3	976.00
YSWT06	237383	5833222	535.1	562.00
YSWT07	238427	5832689	511	252.00
YSWT08	238667	5832295	509	688.00
YSWT09	237362	5832449	511.2	614.00
YSWT10	237778	5832435	519	198.00
YSWT11	237721	5831776	516	287.00
YSWT12	237577	5831553	507.8	129.00
YSWT13	238475	5832492	516.8	121.00
YSWT14	238318	5832069	515.5	270.00
YSWT15	238663	5831739	510.5	248.00
YSWT16	238151	5831503	512.6	112.00
YSWT17	237011	5830822	491.4	230.00
YSWT18	236257	5830395	485	557.00
YSWT19	236743	5830314	480.4	615.00
YSWT20	236485	5829872	487.8	696.00
YSWT21	236209	5829620	479.9	426.00
YSWT22	237009	5829643	481	332.00
YSWT23	235970	5829179	471	284.00
YSWT24	236860	5829275	477	476.00
YSWT25	235952	5828802	471	172.00
YSWT26	236579	5828800	464.7	274.00
YSWT27	237553	5830953	500.1	172.00
YSWT28	237935	5831086	509.6	130.00
YSWT29	237473	5830494	494.2	97.49
YSWT30	238063	5830698	504.6	538.00
YSWT31	238489	5830840	505.8	469.00
YSWT32	239624	5830764	501	168.00
YSWT33	239378	5830392	495	450.00
YSWT34	240083	5830399	499.2	153.85
YSWT35	239743	5830020	487.7	98.35
YSWT36	239743	5830020	487.7	98.35
YSWT37	239743	5830020	487.7	98.35
YSWT38	239743	5830020	487.7	98.35
YSWT39	239743	5830020	487.7	98.35
YSWT40	239743	5830020	487.7	98.35

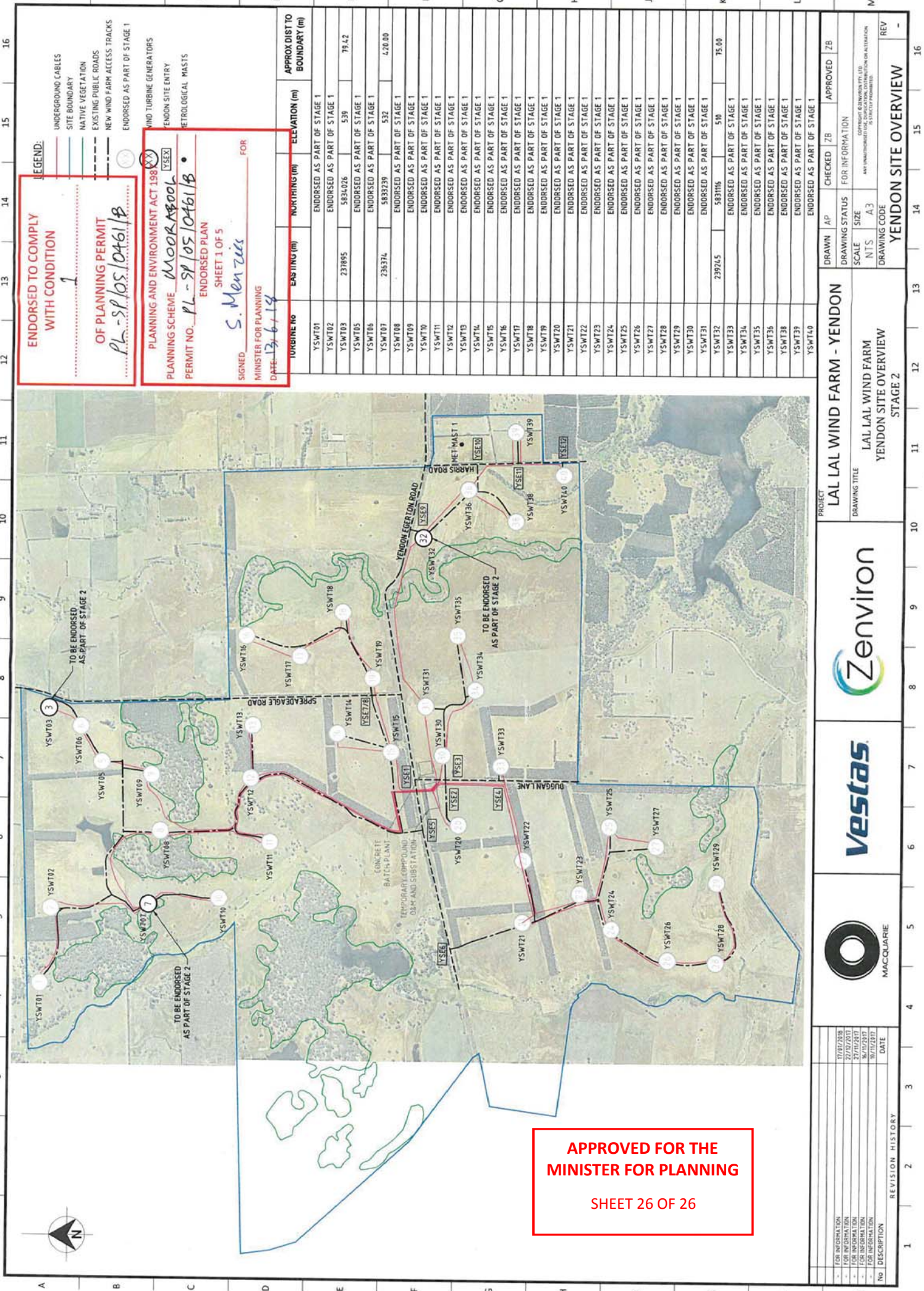
PROJECT	DRAWN	AP	CHECKED	ZB	APPROVED	ZB
LAL LAL WIND FARM - YENDON						
DRAWING TITLE	SCALE	SIZE	DRAWING CODE	REV		
LAL LAL WIND FARM YENDON SITE OVERVIEW	NTS	A3				
YENDON SITE OVERVIEW						



REVISION HISTORY	DATE
FOR INFORMATION	17/01/2018
FOR INFORMATION	22/02/2017
FOR INFORMATION	27/03/2017
FOR INFORMATION	16/07/2017
FOR INFORMATION	10/10/2017

REVISION HISTORY	DATE
FOR INFORMATION	17/01/2018
FOR INFORMATION	22/02/2017
FOR INFORMATION	27/03/2017
FOR INFORMATION	16/07/2017
FOR INFORMATION	10/10/2017





ENDORSED TO COMPLY  
WITH CONDITION  
1

OF PLANNING PERMIT  
PL-SP/05/0461/B

PLANNING AND ENVIRONMENT ACT 1987  
PLANNING SCHEME MOORABOOL  
PERMIT NO. PL-SP/05/0461/B  
ENDORSED PLAN  
SHEET 1 OF 5  
SIGNED S. Menzies FOR  
MINISTER FOR PLANNING  
DATE 13/6/14

TURBINE NO	EASTING (m)	NORTHING (m)	ELEVATION (m)	APPROX DIST TO BOUNDARY (m)
YSWT01			ENDORSED AS PART OF STAGE 1	
YSWT02			ENDORSED AS PART OF STAGE 1	
YSWT03	237895	5834026	539	79.42
YSWT05			ENDORSED AS PART OF STAGE 1	
YSWT06			ENDORSED AS PART OF STAGE 1	
YSWT07	238374	5833239	532	420.00
YSWT08			ENDORSED AS PART OF STAGE 1	
YSWT09			ENDORSED AS PART OF STAGE 1	
YSWT10			ENDORSED AS PART OF STAGE 1	
YSWT11			ENDORSED AS PART OF STAGE 1	
YSWT12			ENDORSED AS PART OF STAGE 1	
YSWT13			ENDORSED AS PART OF STAGE 1	
YSWT14			ENDORSED AS PART OF STAGE 1	
YSWT15			ENDORSED AS PART OF STAGE 1	
YSWT16			ENDORSED AS PART OF STAGE 1	
YSWT17			ENDORSED AS PART OF STAGE 1	
YSWT18			ENDORSED AS PART OF STAGE 1	
YSWT19			ENDORSED AS PART OF STAGE 1	
YSWT20			ENDORSED AS PART OF STAGE 1	
YSWT21			ENDORSED AS PART OF STAGE 1	
YSWT22			ENDORSED AS PART OF STAGE 1	
YSWT23			ENDORSED AS PART OF STAGE 1	
YSWT24			ENDORSED AS PART OF STAGE 1	
YSWT25			ENDORSED AS PART OF STAGE 1	
YSWT26			ENDORSED AS PART OF STAGE 1	
YSWT27			ENDORSED AS PART OF STAGE 1	
YSWT28			ENDORSED AS PART OF STAGE 1	
YSWT29			ENDORSED AS PART OF STAGE 1	
YSWT30			ENDORSED AS PART OF STAGE 1	
YSWT31			ENDORSED AS PART OF STAGE 1	
YSWT32	239245	5831116	510	75.00
YSWT33			ENDORSED AS PART OF STAGE 1	
YSWT34			ENDORSED AS PART OF STAGE 1	
YSWT35			ENDORSED AS PART OF STAGE 1	
YSWT36			ENDORSED AS PART OF STAGE 1	
YSWT38			ENDORSED AS PART OF STAGE 1	
YSWT39			ENDORSED AS PART OF STAGE 1	
YSWT40			ENDORSED AS PART OF STAGE 1	

PROJECT LAL LAL WIND FARM - YENDON		DRAWN AP		CHECKED ZB		APPROVED ZB	
DRAWING TITLE LAL LAL WIND FARM YENDON SITE OVERVIEW STAGE 2		DRAWING STATUS SCALE NTS		FOR INFORMATION SIZE A3		REV	
REVISION HISTORY		DATE		DESCRIPTION		REV	
1		17/01/2013		FOR INFORMATION		-	
2		22/02/2013		FOR INFORMATION		-	
3		27/01/2017		FOR INFORMATION		-	
4		16/01/2017		FOR INFORMATION		-	
5		10/11/2017		FOR INFORMATION		-	

MACQUARIE  
VESTAS  
ZENVION

PROJECT  
LAL LAL WIND FARM - YENDON

DRAWING TITLE  
LAL LAL WIND FARM  
YENDON SITE OVERVIEW  
STAGE 2

DRAWING STATUS  
SCALE  
NTS

FOR INFORMATION  
SIZE  
A3

REV

YENDON SITE OVERVIEW