

# Lal Lal Wind Farms

## Horsehill Road closure, crane movements

### August 2019



### Crane movements across Horsehill Road

As previously notified, crane movements are required across Horsehill Road South to complete works on turbine construction of towers 23, 24. Details are in the Traffic Management plans below for the temporary closures.

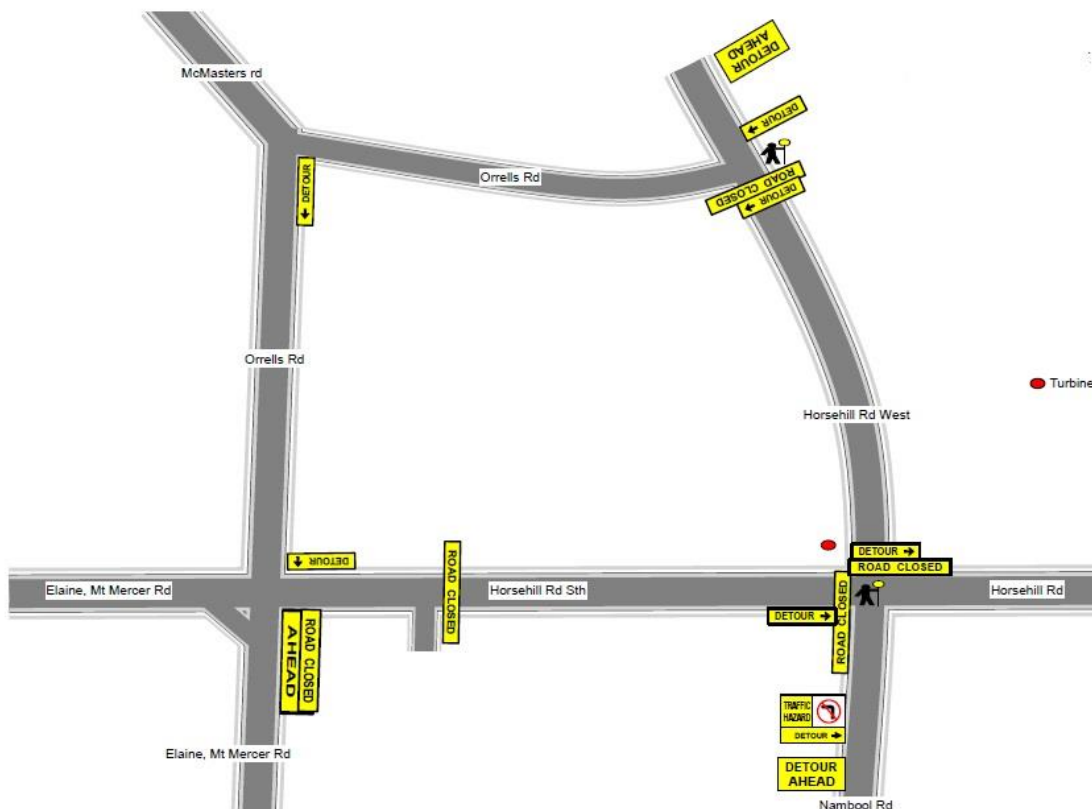
To make it safe for our project neighbours and the travelling public, Horsehill Road South will be closed occasionally, commencing 3 August 2019. Closures will be less than an hour at a time, however detours are available to ensure no delays are incurred if any unforeseen circumstances occur.

### Traffic Management: details of road closure Horsehill Road South/West

Traffic management will be in place with a diversion down Orrells Road. Access to the Cemetery will be unaffected.

Please take note of detour signs and traffic management crew when travelling in the area. These works could be delayed due to weather conditions.

### Closure of Horsehill Road South



## Construction work hours

Construction work hours will be 7am and 6.00pm, Monday to Sunday. These works are authorised to take place out of hours to avoid windy weather. We apologise for any inconvenience caused by these works and your patience is most appreciated.

## Future construction updates

Further construction updates to follow via community bulletins distributed in the local area.



### For more information

**Email** [info@lallalwindfarms.com.au](mailto:info@lallalwindfarms.com.au)

**Phone** 1800 187 183

**Web** [www.lallalwindfarms.com.au](http://www.lallalwindfarms.com.au)

**Visit** Buninyong Information Centre, Warrenheip Street Buninyong

